



ST6GAL1 Polyclonal Antibody

Catalog No	YP-Ab-14100
Isotype	IgG
Reactivity	Human;Rat;Mouse
Applications	WB;IHC;IF;ELISA
Gene Name	ST6GAL1 SIAT1
Protein Name	ST6GAL1
Immunogen	Synthetic peptide from human protein at AA range: 63-135
Specificity	The antibody detects endogenous ST6GAL1
Formulation	Liquid in PBS containing 50% glycerol, 0.5% BSA and 0.02% sodium azide.
Source	Polyclonal, Rabbit,IgG
Purification	The antibody was affinity-purified from rabbit antiserum by affinity-chromatography using epitope-specific immunogen.
Dilution	IHC-p 1:50-200, ELISA 1:10000-20000, WB 1:500-2000. IF 1:50-200
Concentration	1 mg/ml
Purity	≥90%
Storage Stability	-20°C/1 year
Synonyms	Beta-galactoside alpha-2,6-sialyltransferase 1 (Alpha 2,6-ST 1;EC 2.4.99.1;B-cell antigen CD75;CMP-N-acetylneuraminate-beta-galactosamide-alpha-2,6-sialyltransferase 1;ST6Gal I;ST6GalI;Sialyltransferase 1)
Observed Band	
Cell Pathway	Golgi apparatus, Golgi stack membrane ; Single-pass type II membrane protein . Secreted. Membrane-bound form in trans cisternae of Golgi. Secreted into the body fluid.
Tissue Specificity	Liver,Lymph,Placenta,Skin,Spleen,Thymus,
Function	catalytic activity: CMP-N-acetylneuraminate + beta-D-galactosyl-1,4-N-acetyl-beta-D-glucosamine = CMP + alpha-N-acetylneuraminyl-2,6-beta-D-galactosyl-1,4-N-acetyl-beta-D-glucosamine e.,function: Transfers sialic acid from the donor of substrate CMP-sialic acid to galactose containing acceptor substrates.,online information: GlycoGene database,online information: ST6Gal I, pathway: Protein modification; protein glycosylation.,PTM: The HB-6, CDW75, and CD76 differentiation antigens are cell-surface carbohydrate determinants generated by this enzyme.,PTM: The soluble form derives from the membrane form by proteolytic processing.,similarity: Belongs to the glycosyltransferase 29 family.,subcellular location: Membrane-bound form in trans cisternae of Golgi. Secreted into the body



fluid.,

Background

This gene encodes a member of glycosyltransferase family 29. The encoded protein is a type II membrane protein that catalyzes the transfer of sialic acid from CMP-sialic acid to galactose-containing substrates. The protein, which is normally found in the Golgi but can be proteolytically processed to a soluble form, is involved in the generation of the cell-surface carbohydrate determinants and differentiation antigens HB-6, CD75, and CD76. This gene has been incorrectly referred to as CD75. Three transcript variants encoding two different isoforms have been described. [provided by RefSeq, Aug 2009],

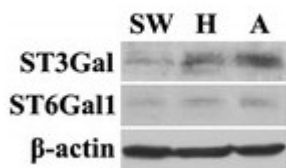
matters needing attention

Avoid repeated freezing and thawing!

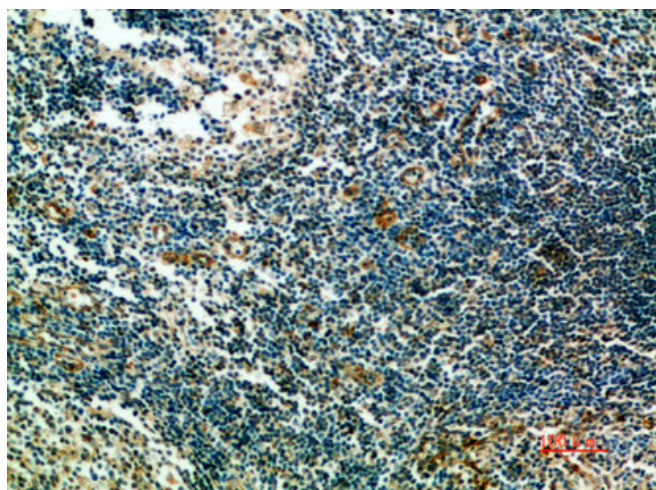
Usage suggestions

This product can be used in immunological reaction related experiments. For more information, please consult technical personnel.

Products Images



Liang, Yangui, et al. "Development of a novel method to evaluate sialylation of glycoproteins and analysis of gp96 sialylation in Hela, SW1990 and A549 cell lines." Biological research 48.1 (2015): 52.



Immunohistochemical analysis of paraffin-embedded human-tonsils, antibody was diluted at 1:200